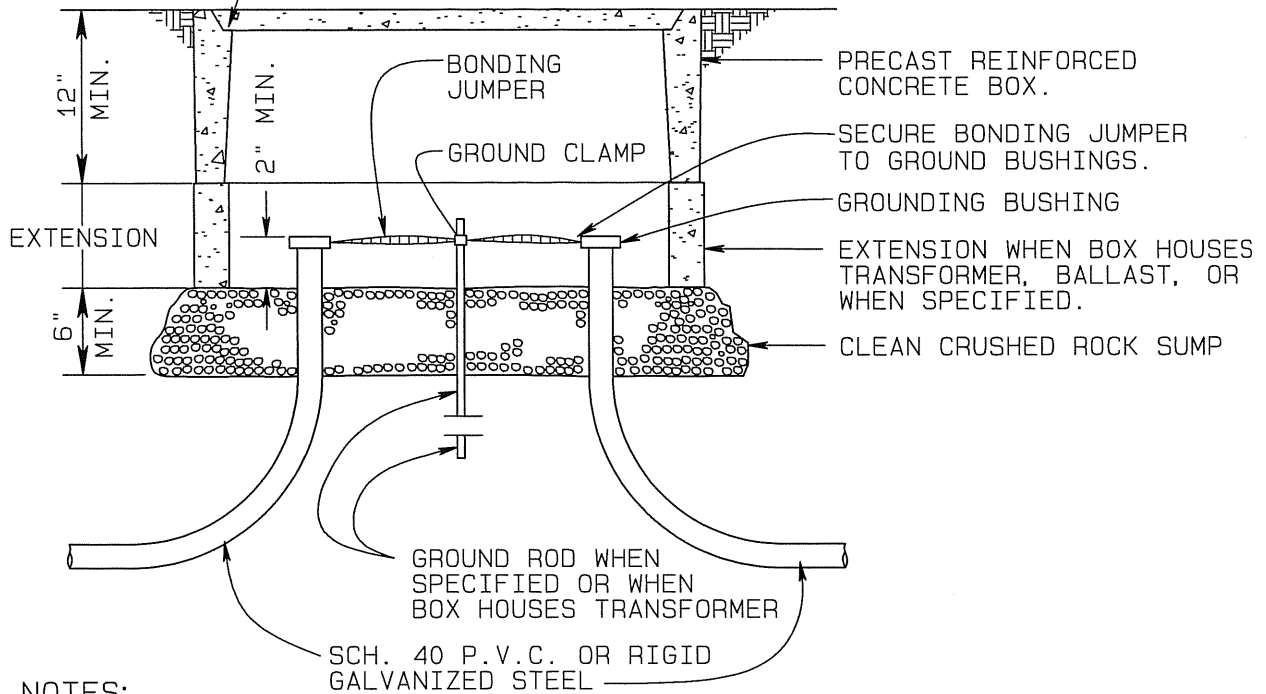


3/8" BRASS OR STAINLESS STEEL STUDBOLTS, NUTS AND WASHERS, 2 PER BOX. RECESS IN COVER FOR NUT.

TOP VIEW

1/2" MIN. LIP
3/4" MAX.



NOTES:

1. EXCEPT AS OTHERWISE DIRECTED BY THE COUNTY ENGINEER, CONSTRUCTION SHALL CONFORM TO THESE REQUIREMENTS AS WELL AS THOSE DETAILS SHOWN IN CALIFORNIA STANDARD ES-8, UNLESS A 5(T) TRAFFIC PULL BOX IS REQUIRED (SEE NOTE 3).
2. PULL BOX COVERS SHALL BE BOLTED AND INSCRIBED "STREET LIGHTING".
3. PULL BOXES PLACED OUTSIDE OF CONCRETE SIDEWALK AREAS, CONCRETE MEDIAN ISLAND AREAS, AND PLANTED STRIP AREAS LOCATED BEHIND CURBS OR A.C. DIKES SHALL BE 5(T) TRAFFIC PULL BOXES WITH STEEL COVERS AND SPECIAL CONCRETE FOOTING. SEE DRAWING NO. 602 AND CALIFORNIA STATE STANDARD ES-8.
4. GROUT BOTTOM OF PULL BOX ONCE CONDUCTORS HAVE BEEN INSTALLED.

COUNTY OF SONOMA DEPARTMENT OF TRANSPORTATION AND PUBLIC WORKS		
PULL BOX INSTALLATION NO. 5 PULL BOX		
DATE: MAY 2004	REVISED:	
APPROVED BY:	SCALE: NONE	DRAWING NO. 600