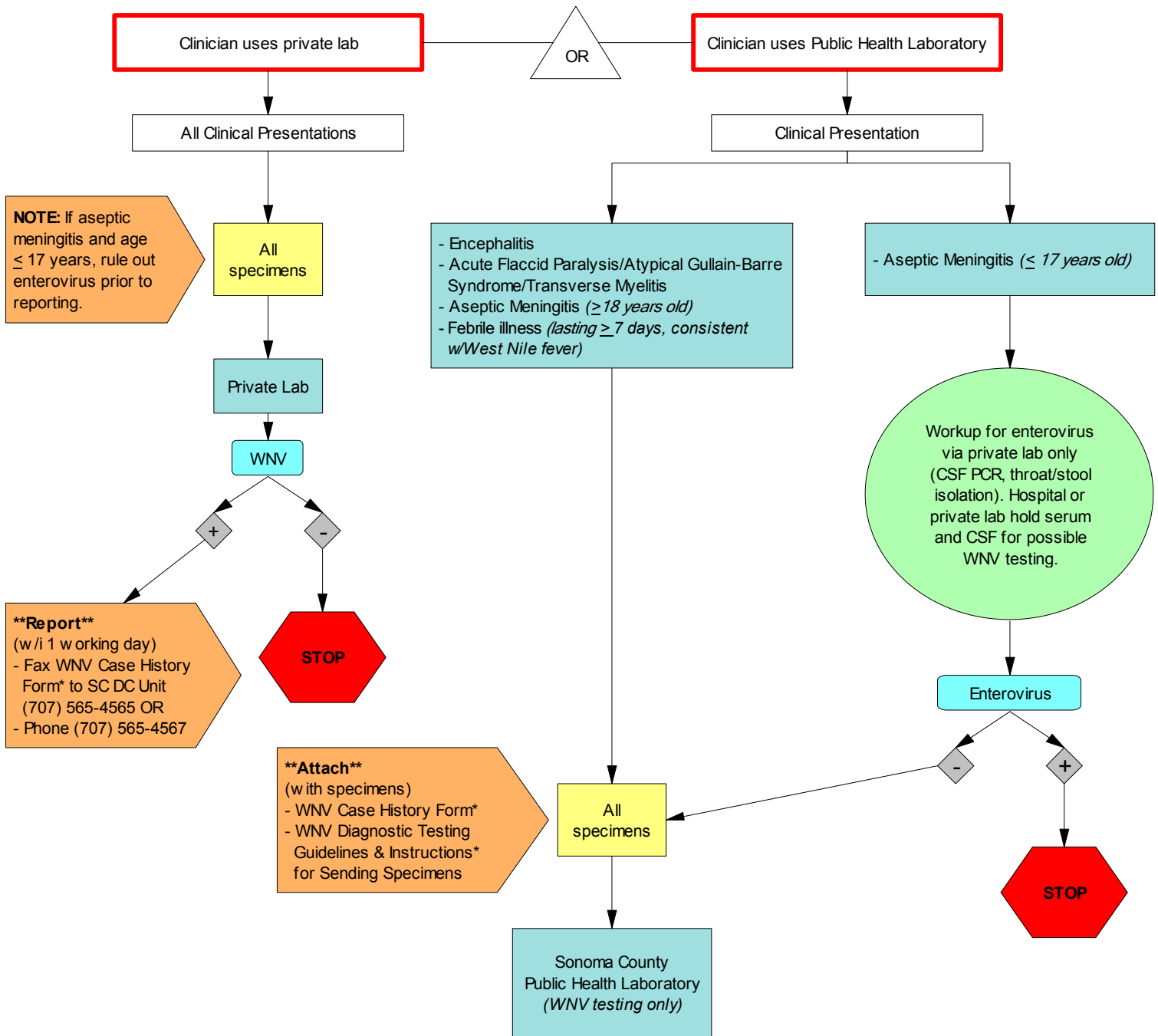


West Nile Virus Specimen Algorithm

Sonoma County Department of Health Services



*Download forms from the web at: <http://www.sonoma-county.org/health/ph/phpreparedness/wnv.htm>

- Reporting Instructions**
- If **private lab** is used, all laboratory test positive (EIA or IFA) cases of WNV should be reported within one working day (Mon – Fri) to the Sonoma County DHS Communicable Disease Unit by faxing the West Nile Virus Case History Form to 707-565-4565 or by phone to 707-565-4567.
 - If **Public Health Laboratory** is used, reporting will be done by the Public Health Laboratory. Reactive samples will be sent to the State for confirmation via PRNT. Samples will be sent to the California Encephalitis Project if appropriate.

Contact Information

Sonoma County Public Health Laboratory
 Mon-Fri 8:00 a.m. – 5:00 p.m.
 3313 Chanate Road
 Santa Rosa, CA 95404
 Phone: 707-565-4711
 Fax: 707-565-7839

Sonoma County DHS Disease Control Unit
 625 5th Street
 Santa Rosa, CA 95404
 Phone: 707-565-4567
 Fax: 707-565-4565

State Viral and Rickettsial Disease Lab Specimen Receiving
 850 Marina Bay Parkway
 Richmond, CA 94804

 West Nile Surveillance Coordinator
 Phone: 510-307-8606
 Fax: 510-307-8599