

2006 CROP REPORT

IN THIS ISSUE:

- ◊ 2006 Crop Report
- ◊ USDA Secretarial Disaster Designation
- ◊ Detection Program

Each year the Agricultural Commissioner's Office publishes an annual Agricultural Crop Report. Currently, agricultural staff members, Cree Morgan and Deanna McAulay, are working on the 2006 Crop Report, which is expected to be completed by June.

Each county in the State is required to produce an annual crop report for the Secretary of the California Department of Food and Agriculture detailing the county's agricultural production and value. Like Sonoma County, many of the other counties crop reports are available for viewing and downloading on their websites. This valuable information

helps us recognize the abundance and diversity of California's Agriculture producers.

The 2006 Crop Report will be presented to the Sonoma County Board of Supervisors in June. The report will be available on the Agricultural Commissioner's Website <http://www.sonoma-county.org/agcomm/> in June. Along with the 2006 crop report, the Agricultural Commissioner's website also has links for crop reports dating back to 1999.

Cree and Deanna would like to thank all the growers and ranchers who have provided agricultural statistics, which make our annual crop report possible.

USDA SECRETARIAL DISASTER DESIGNATION

The U.S. Department of Agriculture (USDA) has granted a Secretarial Disaster Designation for the counties of Sonoma and Mendocino. Included are the contiguous counties of Lake, Napa, Marin, Solano, Tehama, Glenn, Humboldt, and Trinity. Due to agricultural losses caused by extremely low temperatures, freezing and drought conditions, which occurred December 28, 2006, through February 07, 2007.

Through this program, farmers and ranchers who conducted farming operations can apply for low interest loans. Requests for loans will only cover actual losses as a direct result of the disaster during the time period mentioned above. Individual farmers

and ranchers can request a loan up to \$500,000 at 3.75 percent interest. The deadline for requests is November 21, 2007.

If you are interested in pursuing a loan or need additional information please contact the local office of the USDA's Farm Services Agency at (707) 664-8593. Persons with disabilities who require alternative means for communication of program information should contact USDA's TARGET Center at (202) 720-2600. Information is also available on the USDA's website at:

www.fsa.usda.gov/pas/disaster/assistance1.htm

133 AVIATION BLVD.,
STE. 110
SANTA ROSA, CA 95403

PHONE:
(707) 565-2371

FAX:
(707) 565-3850

E-MAIL:
SONOMAAG@SONOMA-COUNTY.ORG

WEB SITE:
SONOMA-COUNTY.ORG/AGCOMM

DETECTION PROGRAM

Incoming plant shipments from areas of California known-to-be-infested with Glassy-winged Sharpshooter (GWSS) are in full swing. The Agricultural Commissioner's GWSS inspection teams have been working hard inspecting all incoming plant shipments. Yellow panel traps will soon be placed throughout the county. Our trappers place and service over 500 traps throughout the county looking for GWSS.

Along with GWSS inspections, inspectors have also been busy conducting a survey for a new insect, which has recently been introduced into California, the Light Brown Apple Moth (LBAM). This moth is originally from Australia, and has become established in New Zealand, New Caledonia, Hawaii, and the British Isles. Our inspectors have not currently detected the moth in Sonoma County. However, it has been found in Richmond to Alameda, including the communities of Novato, San Rafael, Mill Valley, Sausalito, San Francisco, Berkeley, Albany, and El Cerrito.

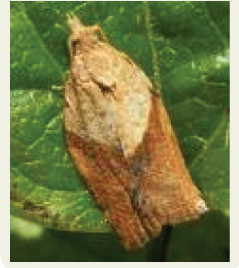
The LBAM, like the GWSS, has a long host list including grapes, apples, and many ornamental shrubs. LBAM adults are light brown, yellowish moths with varying amounts of darker brown, approximately 5 mm in length with a wingspan of 16-25 mm. Eggs are pale white and deposited slightly overlapping each other in groups of 20-50. Larvae are green, about 18 mm long at maturity. Pupae are brown, about 11 mm long.

Wing Span of Light Brown Apple Moth



Damage to fruit occurs as surface feeding by the larvae. On occasion larvae will enter the fruit to feed. LBAM has the potential to devastate California's natural ecosystems, further threatening endangered flora and fauna species. Establishment of this moth will cause direct environmental damage through increased pesticide use by commercial and residential growers.

Adult Light Brown Apple Moth



As always, please be on the lookout for these and other harmful organisms. If you think you have found a unique insect notify our office at (707) 565-2371 and one of our biologists can help identify it for you. For more information on the LBAM and/or GWSS see the California Department of Food and Agriculture website at:

http://www.cdffa.ca.gov/phpps/pdep/lbam_main.htm



Larvae of the Light Brown Apple Moth